

# **PART 8**

## **MANAGEMENT STRUCTURE**

# **Management Structure**

## **Full Members of the Strategic Management Team (SMT)\***

- Chief Executive
- Deputy Chief Executive and City Treasurer
- City Solicitor
- Strategic Director (Children's and Education Services)
- Executive Director of Adult Social Services
- Strategic Director (Growth and Development)
- Strategic Director (Neighbourhoods)
- Director of Population Health and Wellbeing

## **Chief Officers**

- The full members of SMT

## **Statutory Officers**

- |                                     |  |
|-------------------------------------|--|
| • Head of Paid Service              | - Chief Executive  |
| • Chief Finance Officer             | - Deputy Chief Executive and City Treasurer              |
| • Monitoring Officer                | - City Solicitor   |
| • Director of Children's Services   | - Strategic Director (Children's and Education Services) |
| • Director of Adult Social Services | - Executive Director of Adult Social Services            |
| • Director of Public Health         | - Director of Population Health and Wellbeing            |
| • Deputy Chief Finance Officer      | - Deputy City Treasurer                                  |
| • Deputy Monitoring Officer         | - Deputy City Solicitor                                  |
| • Scrutiny Officer                  | - Governance and Scrutiny Support Unit Manager           |

\*While other senior officers may attend SMT on an occasional or regular basis, only the listed officers are considered full members of SMT for the purposes of Part 8 of the Council's Constitution.

## **Deputy Chief Officers/Heads of Service**

| <b>Directorate/Division</b>                       | <b>Deputy Chief Officer/Head of Service</b>   |
|---|---|
| <b>Corporate Core: excluding City Solicitor's</b> | Deputy City Treasurer<br>Director of HR <b>and</b> OD<br>Director of Capital Programmes<br>Director of Customer Services and Transactions<br>Director of ICT<br>Director of Policy, Performance and Reform<br>Head of Audit and Risk Management                           |
| <b>Corporate Core: City Solicitor's</b>           | Deputy City Solicitor<br><b>Head</b> of Strategic Communications<br>Head of Electoral Services<br>Registration and Coroners Service Manager   |
| <b>Neighbourhoods</b>                             | Director of Highways<br><b>Director of Commercial and Operations</b><br>Head of Service (Compliance and Community Safety)<br>Head of Service (Libraries, Galleries and Culture)<br>Head of Service (Parks, Leisure, Youth and Events)<br>Head of Neighbourhood Management |
| <b>Adult Social Services</b>                      | Deputy Director of Adult Social Services<br>Director of Homelessness<br>Assistant Director (Complex Needs)<br>Assistant Director (Front Door)<br>Assistant Director (Neighbourhood Teams)<br><b>Programme Lead for Health &amp; Social Care Integration</b>               |
| <b>Population Health &amp; Wellbeing</b>          | Public Health Consultant<br>Public Health Consultant<br>Strategic Lead (Population Health Programmes)<br>Strategic Head of Health Intelligence  |
| <b>Children's &amp; Education Services</b>        | Deputy Director of Children's Services<br>Director of Education   |

Strategic Lead Safeguarding and  
Practice Improvement  
**Strategic Lead Commissioning**

**Growth and Development:**

**Director of City Centre Growth and  
Infrastructure**

Director of Development and Corporate  
Estate

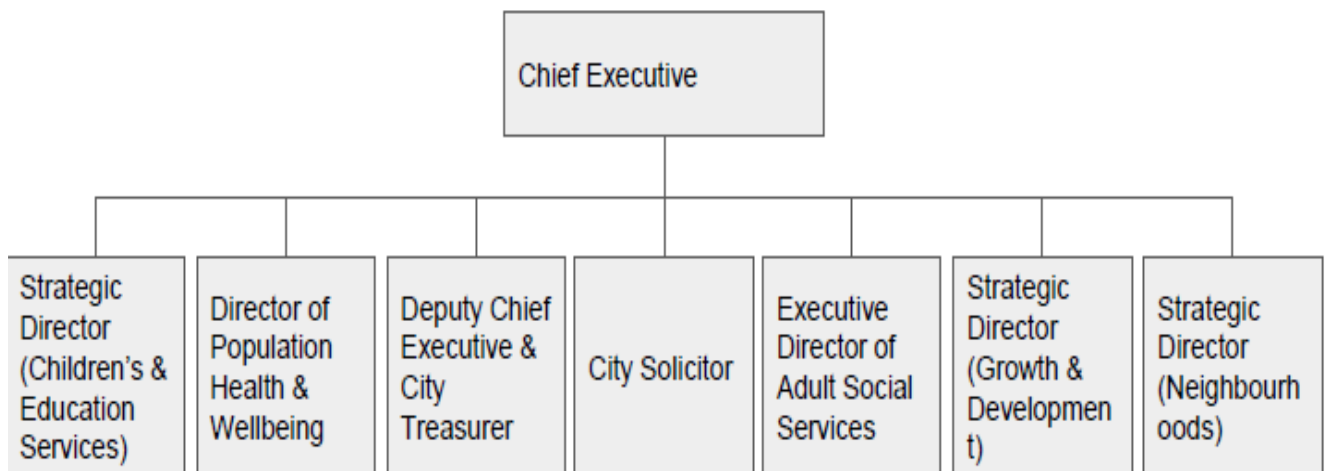
Director of Housing and Residential  
Growth

**Director of Inclusive Growth**

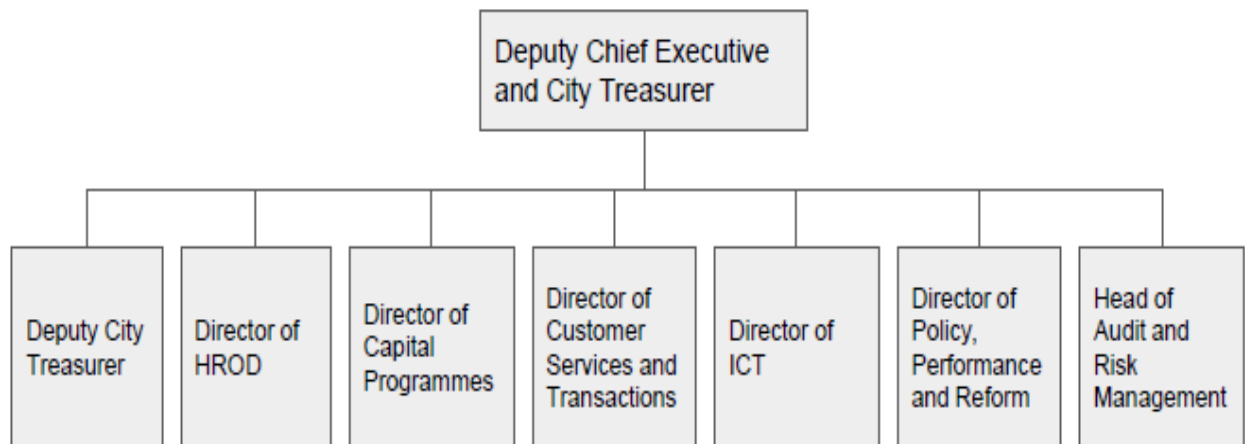
Director of Planning, Licensing and  
Building Control

Additional information on the Council's structure is published within the 'Open Data' section of the Council website in accordance with the DCLG Code of Recommended Practice on Data Transparency.

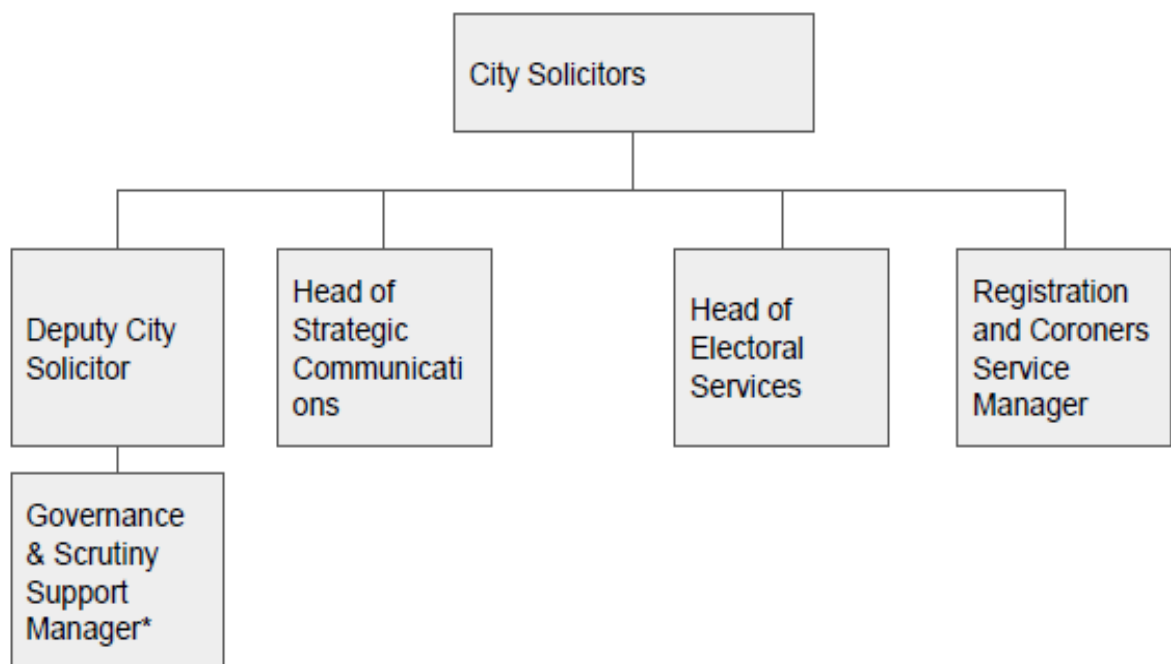
**Full Members of the Strategic Management Team (SMT)**



### Corporate Core: Excluding City Solicitors

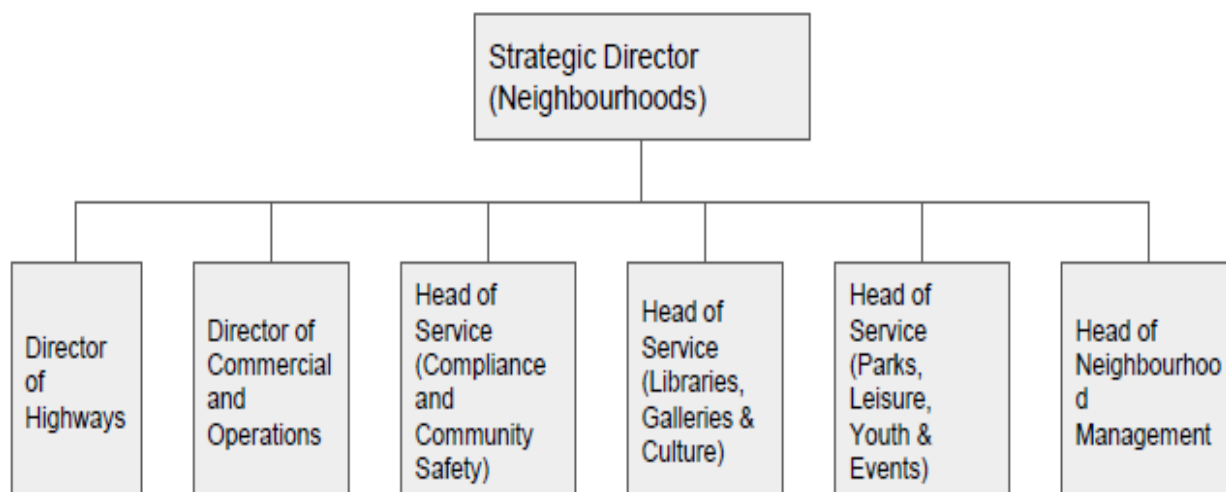


### Corporate Core: City Solicitors

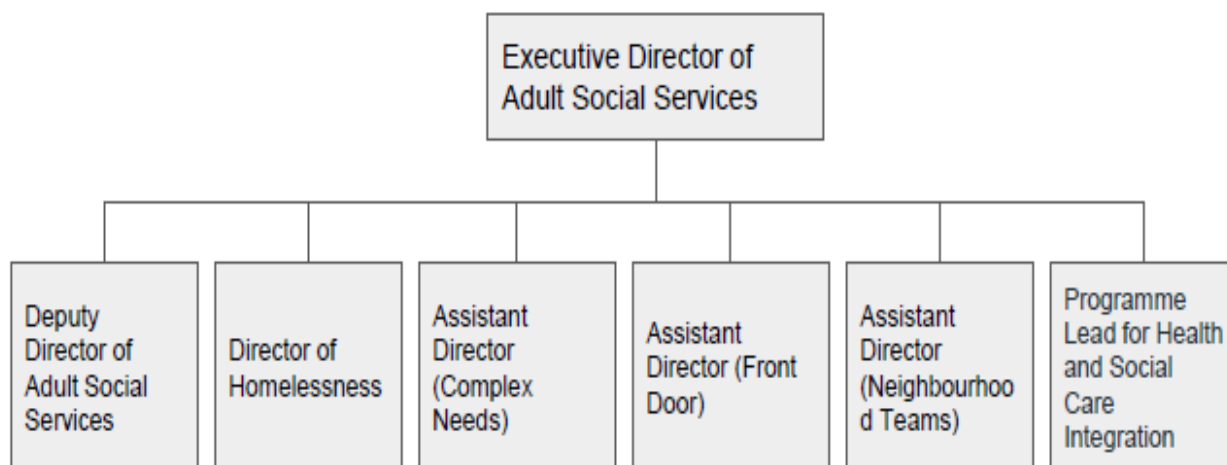


\*The Governance & Scrutiny Support Unit Manager Reports to the Deputy City Solicitor via the Head of Governance

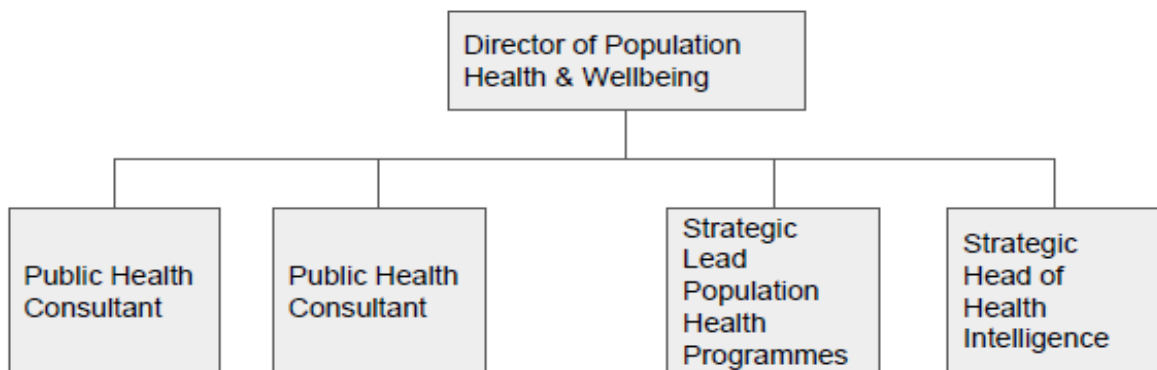
## Neighbourhoods



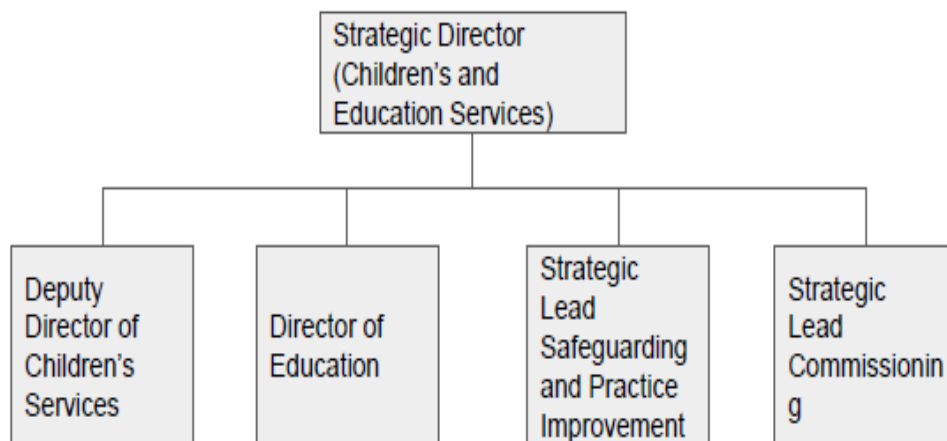
## Adults



### Population Health & Wellbeing



### Children's and Education Services



### Growth and Development

